

Health Level Seven Panel—What's Holding Us Back?

April 27, 2016



Too Many Cooks in the Kitchen?



What Physicians Care About

“We found that, when physicians perceived themselves as providing high-quality care ...they reported better professional satisfaction.

Conversely, physicians described obstacles to providing high-quality care as major sources of professional dissatisfaction.”

AMA-RAND STUDY: Factors Affecting Physician Professional Satisfaction and Their Implications for Patient Care, Health Systems, and Health Policy 2013

© 2016 American Medical Association. All rights reserved.



The Shift to Value-based Payment/Delivery Models

- The federal government (MACRA) is going to “throw the switch” on how we pay for care
 - Still trying to define what and how to measure
- Today’s infrastructure was built to support a pay for volume model
 - Legacy technology is limited in its ability to meet requirements for a learning health care system



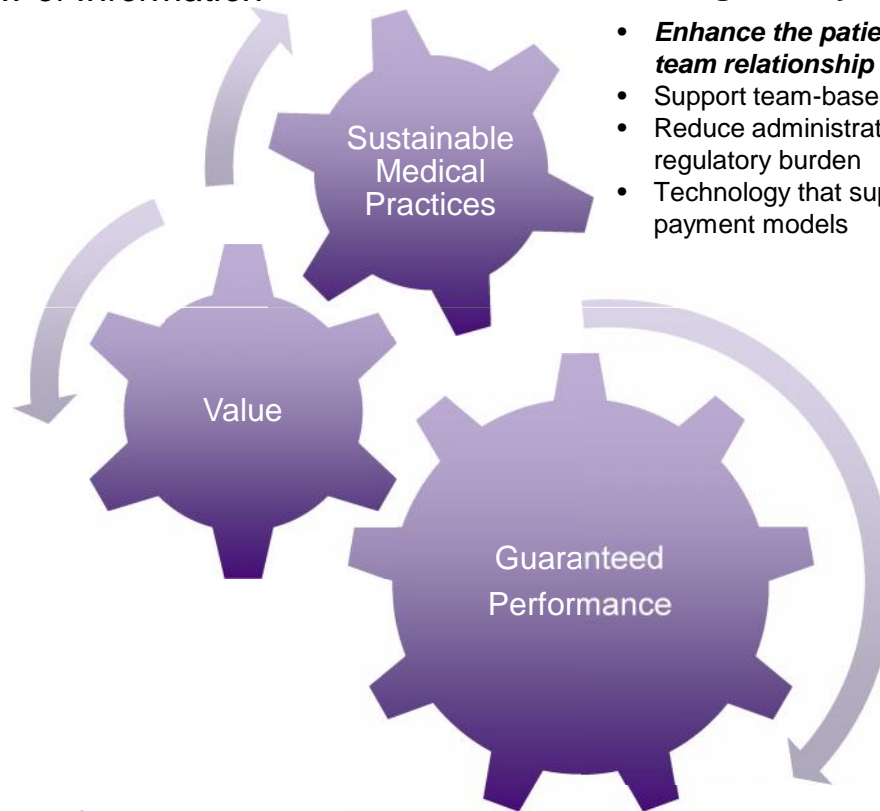
Building a Learning Health Care System

Requires the Free Flow of Information

Restoring the Joy of Practice

Connect Clinic to Community

- Support for virtual and asynchronous care models
- Patient and care givers as active collaborators
- **Value** is not just lower cost and better clinical endpoints
 - Each stakeholder may define value differently
 - New terminologies will be required
- **Network effect** benefits all stakeholders



- **Enhance the patient-care team relationship**
- Support team-based care
- Reduce administrative and regulatory burden
- Technology that supports new payment models

A Network of Networks

- Establish trust through shared governance
- **Develop standards** for information sharing that unlock the value in diverse systems
- **Implement standards in a standardized way**
- 24x7 operations



What is Your Definition of Value?

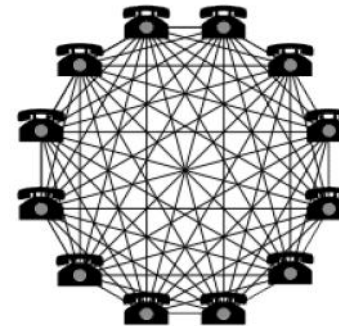
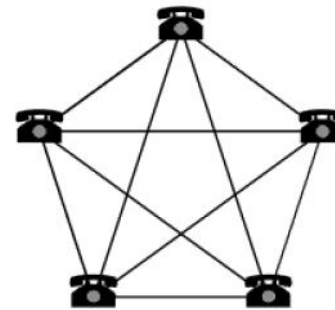


Why Do Network Effects Matter?

“Simply put, a network effect occurs when a product or service becomes *more valuable* to its users as more people use it.”

Source: Andreessen Horowitz “Network Effects Primer” March 2016

Metcalf's Law



Still Playing Information Sharing “Small Ball”

- Focused exclusively on the EHR, but
- ACA/HITECH excluded key players and technologies
 - Post acute care
 - Behavioral care
 - Pharmacy
 - **Medical devices and digital health**
- Ability to exchange data should not be confused with **semantic interoperability** and support for value-based decision making
 - Coding schemes are still largely limited to diagnosis and procedures
 - Valuable information from the **patient narrative** is still not accessible

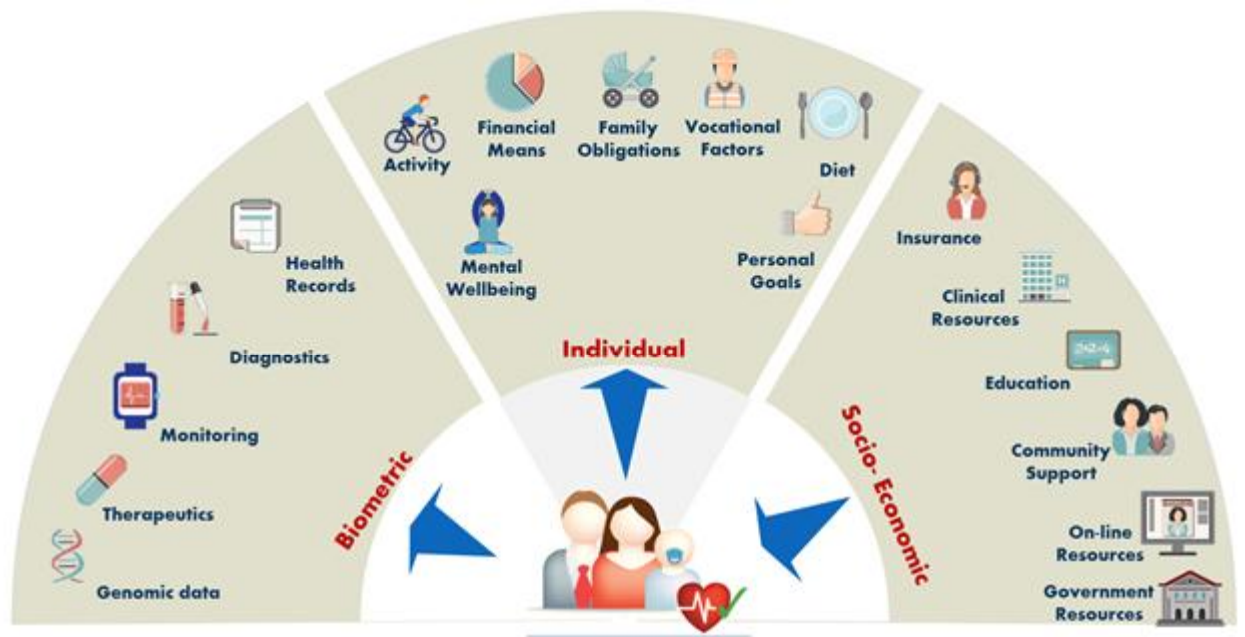


The Importance of “Full” Semantic Interoperability

When only represented by ICD and CPT codes, this AIDS patient ‘looks’ the same...
Additional data standards are needed to fully measure outcomes



A Much Larger Ecosystem Needs to be Addressed



Source: Frost & Sullivan

Data is the Wiring
 Actionable Information for Each Part of the Ecosystem and
 Each Stakeholder is the Goal





Discussion