

## HL7 EHR-System Functional Model and Standard Draft Standard for Trial Use, March 2004



The Ballot Spreadsheet historically is the primary tool for the collection, recording, and reconciliation of HL7 Ballot Comments. The EHR SIG has modeled this Ballot Spreadsheet to support the collection, recording and reconciliation of ballot comments for the four distinct “chapters” of the EHR-S DSTU Ballot as well as collect and manage comments provided for the Reference materials included in the Ballot Package.

## HL7 EHR-System Functional Model and Standard Draft Standard for Trial Use, March 2004



This document has been developed as a visual supplement to the enhanced balloting sections added to both the EHR-S Overview and White Paper documents. A minimal effort in reviewing this document provides the readers a better understanding of how to best use this tool to insure that their votes and comments are effectively cast and reconciled.

**HL7 EHR-System Functional Model and Standard  
Draft Standard for Trial Use, March 2004**



The ballot package was distributed as a self-extracting file, but the contents are also available for individual download from the HL7 EHR SIG website.

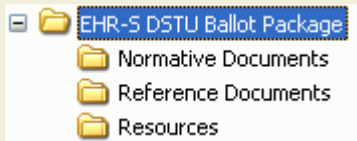


# Ballot Spreadsheet

Via the Readme.htm "Reader's Guide"

Find and open the Ballot Spreadsheet from the Ballot Package interface or from the directory. Please note that one may use the ballot spreadsheet as either an end tool to record and submit your votes and comments or as a companion tool to record comments during the document review process.

As one cannot be expected to conduct a thorough ballot package review in one sitting, the spreadsheet may serve to facilitate the process.



Via the downloaded files





# Ballot Spreadsheet

Once open, please take the time to read the instructions to orient yourself to the ballot tool. Use the right-hand scroll bar to navigate down the instructions.

Microsoft Excel - HL7\_EHR-S\_Functional\_Model\_DSTU\_Ballot2.xls

File Edit View Insert Format Tools Data Window Help Adobe PDF

Arial 10

O1

|   | EHR-S Overview   | Direct Care | Supportive | Information Infrastructure |
|---|--|-------------|------------|----------------------------|
| 1 |  |             |            |                            |
| 2 | <p><b>How to Use this Spreadsheet</b></p> <p><b>Submitting a ballot:</b><br/> <i>This multi-part Ballot Spreadsheet pertains to the EHR-S Overview, Direct Care, Supportive, and Information Infrastructure chapters of the EHR-S Functional Model and Standard. Please be sure you have received and reviewed both the EHR-S Overview and EHR-S Functional Model included in the EHR-S DSTU 2 Ballot Package, opened on March 18, 2004.</i></p> <p><b>SUBMITTER WORKSHEET:</b><br/>                     Please complete the Submitter worksheet entering your contact information and your overall ballot vote. For Organization and Benefactor members, the designated contact must be one of your registered voters to conform with ANSI guidelines.</p> <p><b>BALLOT WORKSHEETS:</b><br/>                     The four ballot worksheets (EHR-S Overview, <b>Direct Care Chapter</b>, <b>Supportive Chapter</b>, and <b>Info. Infrastructure Chapter</b>) provides the balloter a means to record comments for the Informative sections of the EHR-S Functional Model. For those balloters submitting an overall Negative vote, these worksheets are critical for the reconciliation of your vote.<br/>                     For those balloters submitting an overall Affirmative or Abstain vote, these worksheets offers the opportunity for your comments to be collected and considered during the ballot process. Several columns utilize drop-down lists of valid values, denoted by a down-arrow to the right of the cell. Begin entering your comments by first selecting the ballot item from the "Function" column. Some columns utilize a filter which appears as a drop down in the gray row directly below the column header row.<br/>                     If you encounter issues with the spreadsheet, please contact Karen VanHentenryck (karenvan@hl7.org) at HL7 Headquarters.</p> <p><b>BALLOT PACKAGE OVERVIEW SURVEY WORKSHEET:</b><br/>                     This worksheet provides the balloter with an opportunity to comment on all documents within the Ballot Package. This is an Optional worksheet, but your input is greatly valued. Begin this process by selecting a response from the "Survey" column drop-down and work to the right, ending with the "Comment/Recommendation" column.</p> <p><b>ADDITIONAL COMMENTS - THE FUNCTIONAL MODEL WORKSHEET:</b><br/>                     This worksheet offers the balloter an opportunity to comment on the remaining EHR-S Functional Model. Here the balloter may select the Function and Section of the model and provide recommendations on each of the functions selected. Again, this worksheet is optional, designed to collect additional feedback beyond that formally collected by the Ballot Worksheet.</p> <p><b>ADDITIONAL COMMENTS - THE OVERVIEW:</b></p> |             |            |                            |
| 3 |  |             |            |                            |

Ready

Instructions / Submitter / EHR-S Overview / Direct Care Chapter / Supportive Chapter / Info. Infrastructure





# Ballot Spreadsheet

Future navigation of the ballot tool is best done using the Tabs or worksheets identified along the bottom of the application's space.

Those Green colored Tabs represent the Normative Chapters of the Ballot to be commented on.

Microsoft Excel - HL7\_EHR-S\_Functional\_Model\_DSTU\_Ballot2.xls

File Edit View Insert Format Tools Data Window Help Adobe PDF

Arial 10

O1

B C D E F G H I J

1 [EHR-S Overview](#) [Direct Care](#) [Supportive](#) [Information Infrastructure](#)

2 **How to Use this Spreadsheet**

**Submitting a ballot:**  
This multi-part Ballot Spreadsheet pertains to the EHR-S Overview, Direct Care, Supportive, and Information Infrastructure chapters of the EHR-S Functional Model and Standard. Please be sure you have received and reviewed both the EHR-S Overview and EHR-S Functional Model included in the EHR-S DSTU 2 Ballot Package, opened on March 18, 2004.

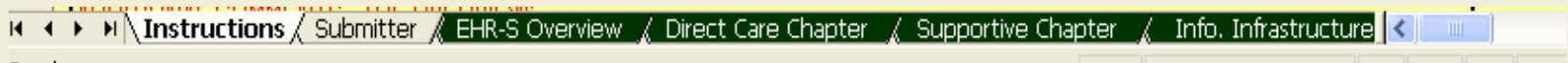
**SUBMITTER WORKSHEET:**  
Please complete the Submitter worksheet entering your contact information and your overall ballot vote. For Organization and Benefactor members, the designated contact must be one of your registered voters to conform with ANSI guidelines.

**BALLOT WORKSHEETS:**  
The four ballot worksheets (EHR-S Overview, Direct Care Chapter, Supportive Chapter, and Info. Infrastructure Chapter) provides the balloter a means to record comments for the Informative sections of the EHR-S Functional Model. For those balloters submitting an overall Negative vote, these worksheets are critical for the reconciliation of your vote.  
For those balloters submitting an overall Affirmative or Abstain vote, these worksheets offers the opportunity for your comments to be collected and considered during the ballot process. Several columns utilize drop-down lists of valid values, denoted by a down-arrow to the right of the cell. Begin entering your comments by first selecting the ballot item from the "Function" column. Some columns utilize a filter which appears as a drop down in the gray row directly below the column header row.  
If you encounter issues with the spreadsheet, please contact Karen VanHentenryck (karenvan@hl7.org) at HL7 Headquarters.

3 **BALLOT PACKAGE OVERVIEW SURVEY WORKSHEET:**  
This worksheet provides the balloter with an opportunity to comment on all documents within the Ballot Package. This is an Optional worksheet, but your input is greatly valued. Begin this process by selecting a response from the "Survey" column drop-down and work to the right, ending with the "Comment/Recommendation" column.

**ADDITIONAL COMMENTS - THE FUNCTIONAL MODEL WORKSHEET:**  
This worksheet offers the balloter an opportunity to comment on the remaining EHR-S Functional Model. Here the balloter may select the Function and Section of the model and provide recommendations on each of the functions selected. Again, this worksheet is optional, designed to collect additional feedback beyond that formally collected by the Ballot Worksheet.

Instructions Submitter EHR-S Overview Direct Care Chapter Supportive Chapter Info. Infrastructure





## Submitter Tab

After reviewing the instructions, proceed to the Submitter tab.



This worksheet is used to identify the submitter's information and to cast votes on each of the four chapters of the EHR-S DSTU.

Please be sure to complete this tab before moving on as the information entered here carries through to the smart features elsewhere in the ballot spreadsheet.

Microsoft Excel - HL7\_EHR-S\_Functional\_Model\_DSTU\_Ballot2.xls

SubByName...

|    | A | B | C | D   | E | F                    | G | H | I | J | K                           |
|----|---|---|---|---|---|----------------------|---|---|---|---|-----------------------------|
|    |   |   |   | BALLOT TITLE:   |   | EHR DSTU 2           |   |   |   |   | <a href="#">Instruction</a> |
| 1  |   |   |   | SUBMITTER'S NAME:                                     |   | <input type="text"/> |   |   |   |   |                             |
| 2  |   |   |   | SUBMITTER'S EMAIL:                                    |   | <input type="text"/> |   |   |   |   |                             |
| 3  |   |   |   | SUBMITTER'S PHONE:                                    |   | <input type="text"/> |   |   |   |   |                             |
| 4  |   |   |   | SUBMITTER'S ORGANIZATION<br>(if applicable):          |   | <input type="text"/> |   |   |   |   |                             |
| 5  |   |   |   | SUBMISSION DATE:                                      |   | <input type="text"/> |   |   |   |   |                             |
| 6  |   |   |   | SUBMITTER'S IDENTIFIER:                               |   | <input type="text"/> |   |   |   |   |                             |
| 7  |   |   |   |   |   |                      |   |   |   |   |                             |
| 8  |   |   |   | DIRECT CARE FUNCTIONS<br>OVERALL BALLOT VOTE:         |   | Abstain              |   |   |   |   |                             |
| 9  |   |   |   | SUPPORTIVE FUNCTIONS<br>OVERALL BALLOT VOTE:          |   | Abstain              |   |   |   |   |                             |
| 10 |   |   |   | INFORMATION<br>INFRASTRUCTURE OVERALL<br>BALLOT VOTE: |   | Abstain              |   |   |   |   |                             |
| 11 |   |   |   | EHR-S OVERVIEW<br>OVERALL BALLOT VOTE:                |   | Abstain              |   |   |   |   |                             |
| 12 |   |   |   |   |   |                      |   |   |   |   |                             |
| 13 |   |   |   |   |   |                      |   |   |   |   |                             |
| 14 |   |   |   |   |   |                      |   |   |   |   |                             |
| 15 |   |   |   |   |   |                      |   |   |   |   |                             |

Please put the name of the HL7 member organization you represent if it is different from the name of the organization you are employed by.

Instructions | Submitter | EHR-S Overview | Direct Care Chapter | Supportive Chapter | Info. Infrast

Ready



## Submitter Tab

Once you have completed the Submitter information, you will then move down to your voting area... And select your individual votes using the drop-down menu.

Voting Area

|   |  |
|---|--|
| BALLOT TITLE: EHR DSTU 2                  |  |
| SUBMITTER'S NAME:                         | Your Name                                      |
| SUBMITTER'S EMAIL:                        | <a href="mailto:youremail@yo">youremail@yo</a> |
| SUBMITTER'S PHONE:                        | (331) 123-4567                                 |
| SUBMITTER'S ORGANIZATION (if applicable): | Your Org                                       |
| SUBMISSION DATE:                          |  |
| SUBMITTER'S IDENTIFIER:                   |  |

|   |  |         |
|---|--|---------|
| BALLOT TITLE: EHR DSTU 2                        |  |         |
| SUBMITTER'S NAME:                               |  |         |
| SUBMITTER'S EMAIL:                              |  |         |
| SUBMITTER'S PHONE:                              |  |         |
| SUBMITTER'S ORGANIZATION (if applicable):       |  |         |
| SUBMISSION DATE:                                |  |         |
| SUBMITTER'S IDENTIFIER:                         |  |         |
| DIRECT CARE FUNCTIONS OVERALL BALLOT VOTE:      |  | Abstain |
| SUPPORTIVE FUNCTIONS OVERALL BALLOT VOTE:       |  | Abstain |
| INFORMATION INFRASTRUCTURE OVERALL BALLOT VOTE: |  | Abstain |
| EHR-S OVERVIEW OVERALL BALLOT VOTE:             |  | Abstain |

|  |  |         |                                  |             |  |          |  |         |  |
|--|--|---------|----------------------------------|-------------|--|----------|--|---------|--|
| SUBMISSION DATE:                           |  |         |                                  |             |  |          |  |         |  |
| SUBMITTER'S IDENTIFIER:                    |  |         |                                  |             |  |          |  |         |  |
| DIRECT CARE FUNCTIONS OVERALL BALLOT VOTE: | <table border="1"> <tr> <td>Abstain</td> <td><input type="button" value="v"/></td> </tr> <tr> <td>Affirmative</td> <td></td> </tr> <tr> <td>Negative</td> <td></td> </tr> <tr> <td>Abstain</td> <td></td> </tr> </table> | Abstain | <input type="button" value="v"/> | Affirmative |  | Negative |  | Abstain |  |
| Abstain                                    | <input type="button" value="v"/>   |         |                                  |             |  |          |  |         |  |
| Affirmative                                |  |         |                                  |             |  |          |  |         |  |
| Negative                                   |  |         |                                  |             |  |          |  |         |  |
| Abstain                                    |  |         |                                  |             |  |          |  |         |  |



# Submitter Tab

A smart feature supplements the instructions and will notify you of key information regarding your vote. Other smart features provide guidance at decision points throughout the ballot spreadsheet as well.

Microsoft Excel - HL7\_EHR-S\_Functional\_Model\_DSTU\_Ballot2.xls

BALLOT TITLE: EHR DSTU 2

SUBMITTER'S NAME:

SUBMITTER'S EMAIL:

SUBMITTER'S PHONE:

SUBMITTER'S ORGANIZATION (if applicable):

SUBMISSION DATE:

SUBMITTER'S IDENTIFIER:

**DIRECT CARE FUNCTIONS OVERALL BALLOT VOTE:** Abstain

**SUPPORTIVE FUNCTIONS OVERALL BALLOT VOTE:** Abstain

**INFORMATION INFRASTRUCTURE OVERALL BALLOT VOTE:** Abstain

**EHR-S OVERVIEW OVERALL BALLOT VOTE:** Abstain

Please put the name of the HL7 member organization you represent if it is different from the name of the organization you are employed by.

SUBMISSION DATE:

SUBMITTER'S IDENTIFIER:

**DIRECT CARE FUNCTIONS OVERALL BALLOT VOTE:** Affirmative

An Overall Affirmative Vote will permit comments to be made on each of the Ballot Documents. However, if you wish to submit a Negative vote on any of the EHR-S Model's Function Names or Function Statements, you should first change your overall vote to Negative.

**SUPPORTIVE FUNCTIONS OVERALL BALLOT VOTE:** Negative

An Overall Negative Vote will permit comments to be made on each of the Ballot Documents. However, please be sure to provide comments supporting each negative vote submitted on the Ballot Worksheet Tab for this Ballot Chapter.



# Overview Tab

Starting on the left column, move across the table using the smart featured drop-down menus to identify those sections to be commented on as well as the nature and rating of your comments.

|    |                               |  |  |  |
|----|-------------------------------|--|--|--|
| 4  |                               |  |  |  |
| 5  | 2.0 Purpose (Normative - 1    |  |  |  |
| 6  | 3.0 Overview and Definition   |  |  |  |
| 7  | 3.1 EHR-S Functional Outline  |  |  |  |
| 8  | 3.2 Sections of the EHR-S F   |  |  |  |
| 9  | 3.3 Components of EHR-S (F    |  |  |  |
| 10 | 3.4 EHR-S Model Profiles: The |  |  |  |
| 11 | Function Name or the          |  |  |  |
| 12 | Function Statement.           |  |  |  |
| 13 |                               |  |  |  |

|  |      |             |   |
|--|------|-------------|---|
| Section  | Pubs | and<br>Type | E |
| 3.2 Sections of the<br>EHR-S Functional<br>Outline | Yes  |             |   |
|  | No   |             |   |

|   |  |                     |                |
|---|--|---------------------|----------------|
| 1 |  |                     |                |
| 2 | Section  | Yote<br>and<br>Type | Existing Wordi |
| 3 |  |                     |                |
| 4 | 3.2 Sections of the<br>EHR-S Functional<br>Outline | Yes                 |                |
| 5 |  | AH-C                |                |
| 6 |  | AH-T                |                |
| 7 |  | AH-S                |                |
| 8 |  |                     |                |
| 9 |  |                     |                |

Microsoft Excel - HL7\_EHR-S\_Functional\_Model\_DSTU\_Ballot2.xls

File Edit View Insert Format Tools Data Window Help Adobe PDF

Type a question for help

W1 fx

E F G H I J

**HL7 EHR System Functional Model and Standard Overview**

| 1  | Section | Yote<br>and<br>Type | Existing Wordi | Proposed Wordin | Comments |
|----|---------|---------------------|----------------|-----------------|----------|
| 2  |         |                     |                |                 |          |
| 3  |         |                     |                |                 |          |
| 4  |         |                     |                |                 |          |
| 5  |         |                     |                |                 |          |
| 6  |         |                     |                |                 |          |
| 7  |         |                     |                |                 |          |
| 8  |         |                     |                |                 |          |
| 9  |         |                     |                |                 |          |
| 10 |         |                     |                |                 |          |
| 11 |         |                     |                |                 |          |
| 12 |         |                     |                |                 |          |
| 13 |         |                     |                |                 |          |
| 14 |         |                     |                |                 |          |
| 15 |         |                     |                |                 |          |
| 16 |         |                     |                |                 |          |
| 17 |         |                     |                |                 |          |
| 18 |         |                     |                |                 |          |
| 19 |         |                     |                |                 |          |
| 20 |         |                     |                |                 |          |
| 21 |         |                     |                |                 |          |
| 22 |         |                     |                |                 |          |
| 23 |         |                     |                |                 |          |
| 24 |         |                     |                |                 |          |
| 25 |         |                     |                |                 |          |
| 26 |         |                     |                |                 |          |
| 27 |         |                     |                |                 |          |
| 28 |         |                     |                |                 |          |
| 29 |         |                     |                |                 |          |
| 30 |         |                     |                |                 |          |
| 31 |         |                     |                |                 |          |
| 32 |         |                     |                |                 |          |

Instructions / Submitter / **EHR-S Overview** / Direct Care Chapter / Supportive Chapter

Ready













# Overview Survey

The next worksheet is an optional opinion survey that includes the Reference Documents.



Your input regarding the Ballot Package materials is requested here. Be as brief or as detailed as you like. This information will be useful as we move forward with the DSTU.

| Ballot Package Overview Survey                 |                      |  |
|--|----------------------|--|
| Document Section                               | Survey               | Comment/Recommendation                       |
| <b>Functional Model</b>                        |                      |  |
| DC.1 - Care Management                         | Minor concerns       | Nesting of Functions in the Report sections? |
| DC.2 - Clinical Decision Support               | In general agreement |  |
| DC.3 - Operations Management and Communication |                      |  |

The screenshot shows a Microsoft Excel spreadsheet titled "HL7\_EHR-S\_Functional\_Model\_DSTU\_Ballot2.xls". The spreadsheet contains a table with the following structure:

| Document Section  | Survey | Comment/Recommendation |
|---|--------|------------------------|
| <b>Functional Model</b>   |        |                        |
| DC.1 - Care Management  |        |                        |
| DC.2 - Clinical Decision Support                                      |        |                        |
| DC.3 - Operations Management and Communication                        |        |                        |
| S.1 - Clinical Support  |        |                        |
| S.2 - Measurement, Analysis, Research and Reports                     |        |                        |
| S.3 - Administrative and Financial                                    |        |                        |
| <b>HL7 EHR System Overview</b>  |        |                        |
| 1.0 Introduction  |        |                        |
| 1.1 What is HL7?  |        |                        |
| 1.2 What are Electronic Health Record Systems?                        |        |                        |
| 1.3 What is the Ballot's Background?                                  |        |                        |
| 1.4 How were the Functions Identified and Developed?                  |        |                        |
| 1.5 What is the Ballot Package?                                       |        |                        |
| 2.0 Purpose (Normative - To be Voted on)                              |        |                        |
| 3.0 Overview and Definition of the Model (Normative - To be Voted on) |        |                        |

A tooltip titled "Survey Response" is visible, stating: "Select a general response from the drop down list. Use the Comment / Recommendation column to provide feedback regarding the EHR DSTU Ballot Package document."





# Overview Survey

Scroll down to complete your overview survey for each of the major reference materials.

The Profiling Materials:

- Care Setting Scenarios
- Care Profile Definitions
- Care Profile Models

are excellent examples of a good next step. Please give us your opinion and, very important, questions regarding them.

Microsoft Excel - HL7\_EHR-S\_Functional\_Model\_DSTU\_Ballot2.xls

|    | A   | B | C |
|----|---|---|---|
| 32 | 4.2 Anticipated Stakeholder Use:<br>U.S. Department of Health and<br>Human Services |   |   |
| 33 | Appendix A  |   |   |
| 34 | Appendix B: What is a DSTU?   |   |   |
| 35 | Appendix C: The Basics of<br>Health Level Seven Balloting                           |   |   |
| 36 | Appendix D: Scenarios on<br>Reading and Voting on Ballot<br>Package                 |   |   |
| 37 | <b>HL7 EHR System White Paper</b>   |   |   |
| 38 | 1 Purpose   |   |   |
| 39 | 2 Overview of HL7 EHR System<br>Functional Model                                    |   |   |
| 40 | 3 Background  |   |   |
| 41 | 4 Definitions   |   |   |
| 42 | 5 HL7 EHR-S Functional Model  |   |   |
| 43 | Appendix A: Overview of related<br>EHR standards                                    |   |   |
| 44 | Appendix B: Current International<br>EHR Standards Activities                       |   |   |
| 45 | Appendix C: Future International<br>Directions for EHR Standards                    |   |   |
| 46 | Appendix D: What is a DSTU?   |   |   |
| 47 | <b>Care Setting Basic Scenarios</b>   |   |   |
| 48 | Acute Care  |   |   |
| 49 | Ambulatory Care   |   |   |
| 50 | Long Term Care  |   |   |
| 51 | Care in the Community   |   |   |
| 52 | <b>Care Profile Definitions</b>   |   |   |
| 53 | Acute Care  |   |   |
| 54 | Ambulatory Care   |   |   |
| 55 | Long Term Care  |   |   |
| 56 | Care in the Community   |   |   |
| 57 | <b>Care Profile Functional Models</b>   |   |   |
| 58 | Acute Care  |   |   |
| 59 | Ambulatory Care   |   |   |
| 60 | Long Term Care  |   |   |
| 61 | Care in the Community   |   |   |

Ready

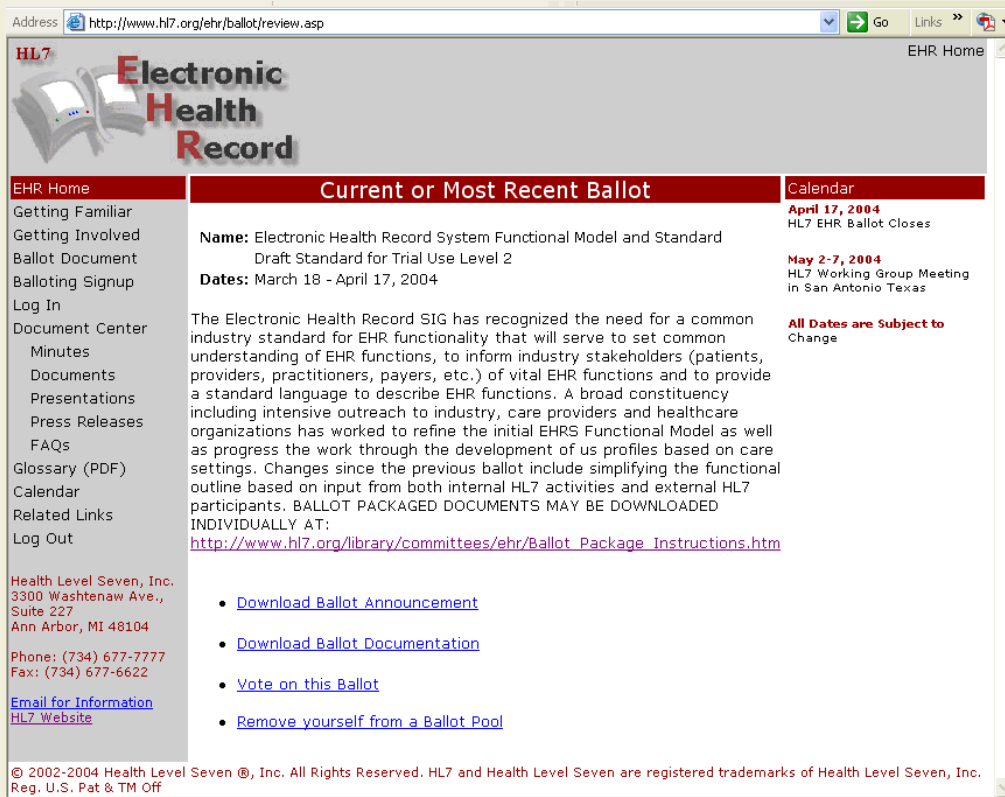






## Online Voting

When you have completed the Ballot Spreadsheet, the Online Voting Feature will be your method of delivery of both your votes, additional comments and the ballot spreadsheet.



Address: <http://www.hl7.org/ehr/ballot/review.asp>

**HL7 Electronic Health Record**

| EHR Home   | Current or Most Recent Ballot  | Calendar  |
|--|--|---|
| <ul style="list-style-type: none"> <li>Getting Familiar</li> <li>Getting Involved</li> <li>Ballot Document</li> <li>Balloting Signup</li> <li>Log In</li> <li>Document Center                             <ul style="list-style-type: none"> <li>Minutes</li> <li>Documents</li> <li>Presentations</li> <li>Press Releases</li> <li>FAQs</li> </ul> </li> <li>Glossary (PDF)</li> <li>Calendar</li> <li>Related Links</li> <li>Log Out</li> </ul> <p>Health Level Seven, Inc.<br/>3300 Washtenaw Ave.,<br/>Suite 227<br/>Ann Arbor, MI 48104</p> <p>Phone: (734) 677-7777<br/>Fax: (734) 677-6622</p> <p><a href="#">Email for Information</a><br/><a href="#">HL7 Website</a></p> | <p><b>Name:</b> Electronic Health Record System Functional Model and Standard<br/>Draft Standard for Trial Use Level 2</p> <p><b>Dates:</b> March 18 - April 17, 2004</p> <p>The Electronic Health Record SIG has recognized the need for a common industry standard for EHR functionality that will serve to set common understanding of EHR functions, to inform industry stakeholders (patients, providers, practitioners, payers, etc.) of vital EHR functions and to provide a standard language to describe EHR functions. A broad constituency including intensive outreach to industry, care providers and healthcare organizations has worked to refine the initial EHRS Functional Model as well as progress the work through the development of us profiles based on care settings. Changes since the previous ballot include simplifying the functional outline based on input from both internal HL7 activities and external HL7 participants. <b>BALLOT PACKAGED DOCUMENTS MAY BE DOWNLOADED INDIVIDUALLY AT:</b><br/><a href="http://www.hl7.org/library/committees/ehr/Ballot_Package_Instructions.htm">http://www.hl7.org/library/committees/ehr/Ballot_Package_Instructions.htm</a></p> <ul style="list-style-type: none"> <li><a href="#">Download Ballot Announcement</a></li> <li><a href="#">Download Ballot Documentation</a></li> <li><a href="#">Vote on this Ballot</a></li> <li><a href="#">Remove yourself from a Ballot Pool</a></li> </ul> | <p><b>April 17, 2004</b><br/>HL7 EHR Ballot Closes</p> <p><b>May 2-7, 2004</b><br/>HL7 Working Group Meeting in San Antonio Texas</p> <p><b>All Dates are Subject to Change</b></p> |

© 2002-2004 Health Level Seven ®, Inc. All Rights Reserved. HL7 and Health Level Seven are registered trademarks of Health Level Seven, Inc. Reg. U.S. Pat & TM Off

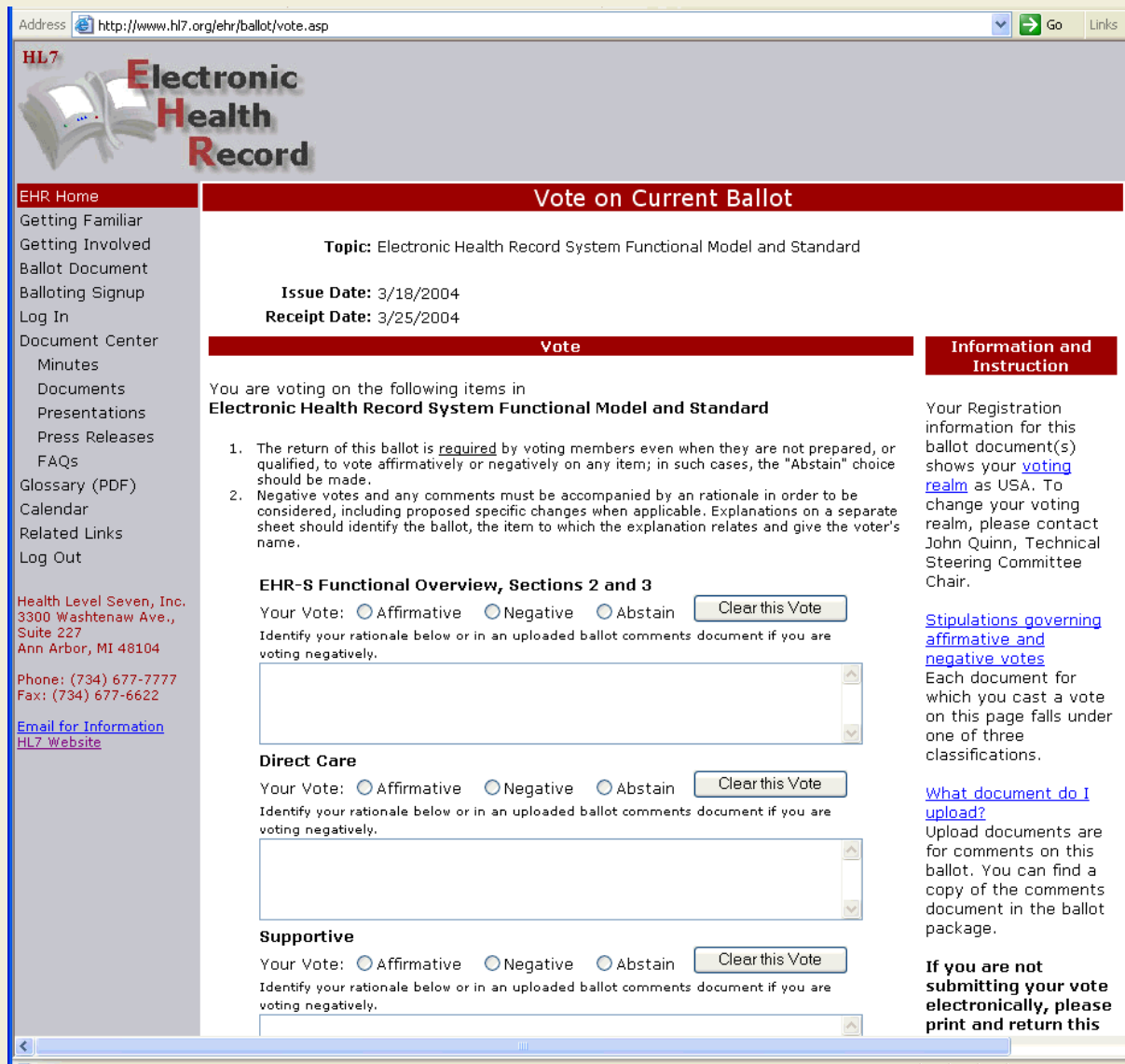




## Online Voting

Online voting is more than just a way to cast your vote and attach your ballot. AS you can see, the online ballot page is supplemented with additional instructions and links to the EHR SIG related work..

Select your vote for each chapter and continue down the page...



Address: <http://www.hl7.org/ehr/ballot/vote.asp>

**HL7 Electronic Health Record**

**EHR Home**

- Getting Familiar
- Getting Involved
- Ballot Document
- Balloting Signup
- Log In
- Document Center
  - Minutes
  - Documents
  - Presentations
  - Press Releases
  - FAQs
- Glossary (PDF)
- Calendar
- Related Links
- Log Out

Health Level Seven, Inc.  
3300 Washtenaw Ave.,  
Suite 227  
Ann Arbor, MI 48104  
Phone: (734) 677-7777  
Fax: (734) 677-6622  
[Email for Information](#)  
[HL7 Website](#)

**Vote on Current Ballot**

**Topic:** Electronic Health Record System Functional Model and Standard

**Issue Date:** 3/18/2004  
**Receipt Date:** 3/25/2004

**Vote**

You are voting on the following items in  
**Electronic Health Record System Functional Model and Standard**

- The return of this ballot is required by voting members even when they are not prepared, or qualified, to vote affirmatively or negatively on any item; in such cases, the "Abstain" choice should be made.
- Negative votes and any comments must be accompanied by an rationale in order to be considered, including proposed specific changes when applicable. Explanations on a separate sheet should identify the ballot, the item to which the explanation relates and give the voter's name.

**EHR-S Functional Overview, Sections 2 and 3**

Your Vote:  Affirmative  Negative  Abstain

Identify your rationale below or in an uploaded ballot comments document if you are voting negatively.

**Direct Care**

Your Vote:  Affirmative  Negative  Abstain

Identify your rationale below or in an uploaded ballot comments document if you are voting negatively.

**Supportive**

Your Vote:  Affirmative  Negative  Abstain

Identify your rationale below or in an uploaded ballot comments document if you are voting negatively.

**Information and Instruction**

Your Registration information for this ballot document(s) shows your [voting realm](#) as USA. To change your voting realm, please contact John Quinn, Technical Steering Committee Chair.

[Stipulations governing affirmative and negative votes](#)

Each document for which you cast a vote on this page falls under one of three classifications.

[What document do I upload?](#)

Upload documents are for comments on this ballot. You can find a copy of the comments document in the ballot package.

**If you are not submitting your vote electronically, please print and return this**

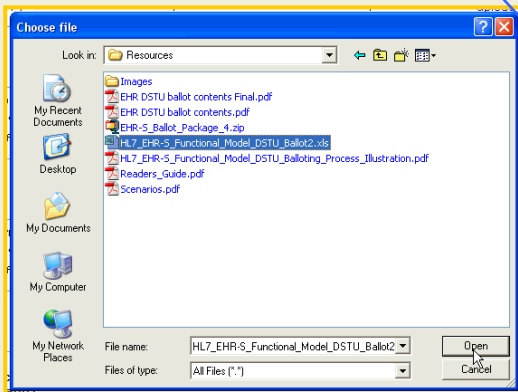




# Online Voting

When you have completed the Online Ballot, check to ensure your votes are correct and click the Browse button to find and attach your completed ballot spreadsheet.

Review the "stipulations governing ... votes" and click the "Cast Vote(s)" button.



Address: <http://www.hl7.org/ehr/ballot/vote.asp>

Health Level Seven, Inc.  
3300 Washtenaw Ave.,  
Suite 227  
Ann Arbor, MI 48104  
Phone: (734) 677-7777  
Fax: (734) 677-6622  
[Email for Information](#)  
[HL7 Website](#)

Your Vote:  Affirmative  Negative  Abstain

Identify your rationale below or in an uploaded ballot comments document if you are voting negatively.

**Direct Care**  
Your Vote:  Affirmative  Negative  Abstain

Identify your rationale below or in an uploaded ballot comments document if you are voting negatively.

**Supportive**  
Your Vote:  Affirmative  Negative  Abstain

Identify your rationale below or in an uploaded ballot comments document if you are voting negatively.

**Information Infrastructure**  
Your Vote:  Affirmative  Negative  Abstain

Identify your rationale below or in an uploaded ballot comments document if you are voting negatively.

**Attachment (Only 1 file can be uploaded for the entire ballot package):**

If you have already uploaded a ballot comment supporting document, you do not need to submit it again unless it has changed. If you do re-submit a document, it will overwrite any that have preceded it.

I have read and agree to abide by the [stipulations governing affirmative and negative votes](#).

[Stipulations governing affirmative and negative votes](#)

Each document for which you cast a vote on this page falls under one of three classifications.

[What document do I upload?](#)

Upload documents are for comments on this ballot. You can find a copy of the comments document in the ballot package.

**If you are not submitting your vote electronically, please print and return this completed ballot document to:**

Health Level Seven, Inc.  
3300 Washtenaw Avenue, Suite 227  
Ann Arbor, MI 48104-4261

**Print a copy of this completed ballot document for your records**

Date: 3/25/2004  
Name: Fred Stark  
Organization: Veterans Health Administration  
Phone: 813-864-7365  
Email: Fred.Stark@med.va.gov

**Attachment (Only 1 file can be uploaded for the entire ballot package):**

C:\EHR-S\_Ballot\_Package\Resources\HL7\_EHR-S\_Functional

If you have already uploaded a ballot comment supporting document, you do not need to submit it again unless it has changed. If you do re-submit a document, it will overwrite any that have preceded it.

I have read and agree to abide by the [stipulations governing affirmative and negative votes](#).

